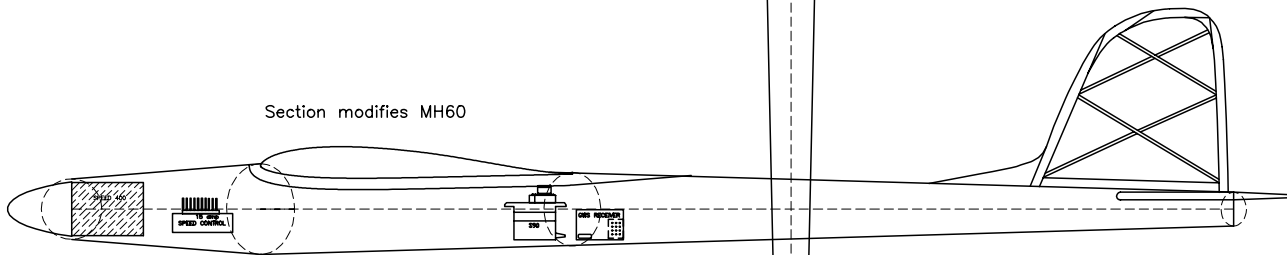


Wing Area 12.45 sq.dec. (192.3 sq.in)  
MAC 136.2 mm (5.34")

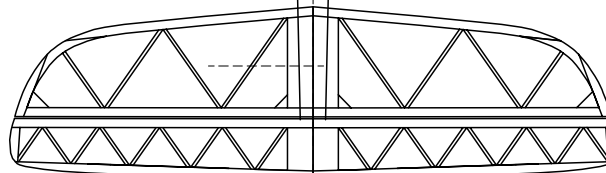
Weight 14.0 oz. (397 gm) with 1100 mAh 7 cell Hecel NiMh pack

Span 914 mm (36")  $Vt = \frac{2.48 \times 432.8}{12.45 \times 136.2} = 0.63$

Section modifies MH60



FUSELAGE KEVLAR 2 layers 2.2oz with 1 layer 0.75 oz glass @ 45°



1/4 Full Size

Ohmbrew 400  
John O'Sullivan  
Nova Scotia